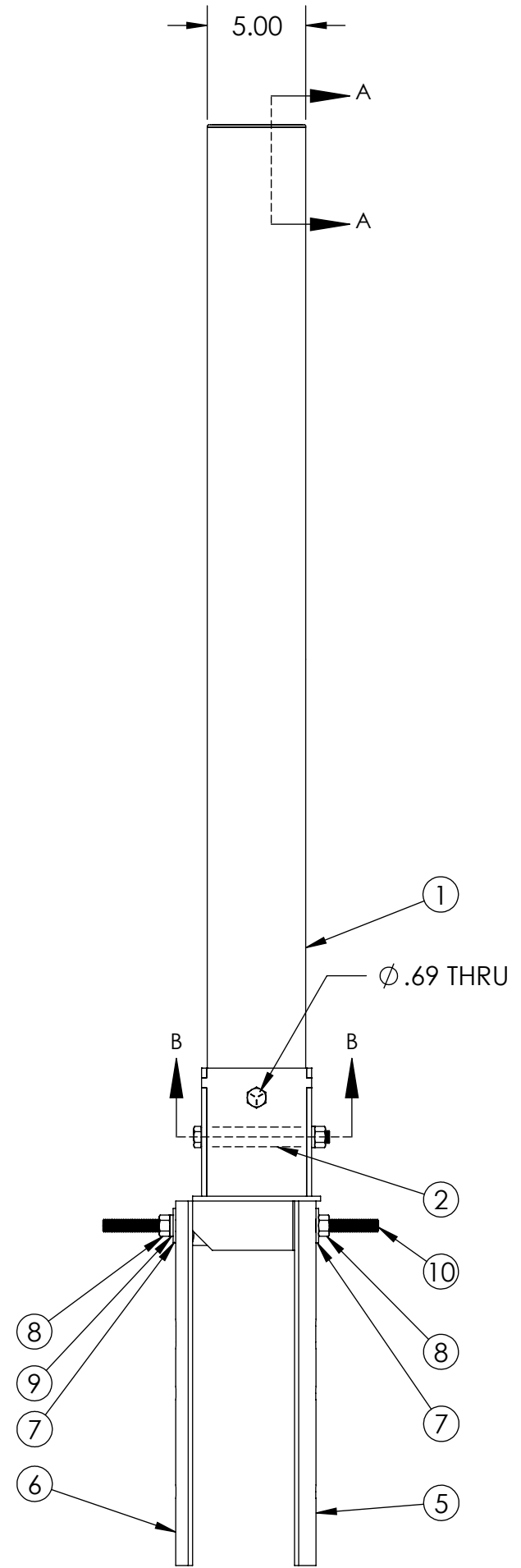
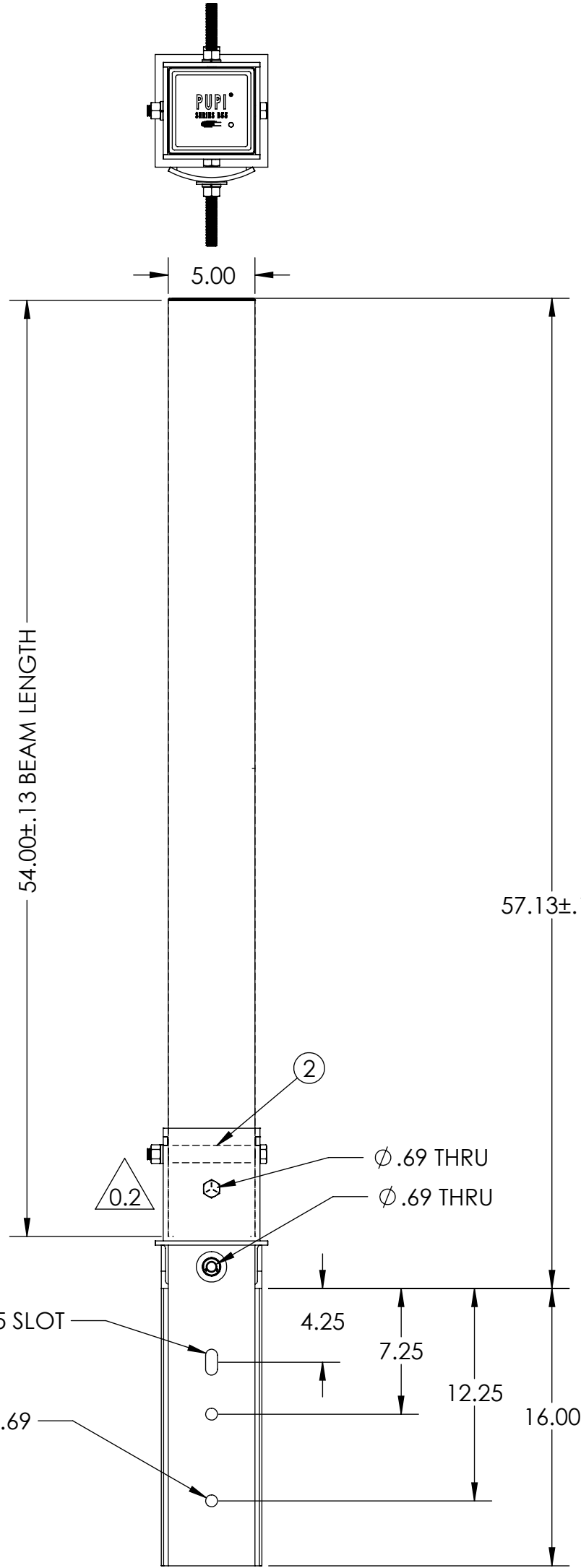
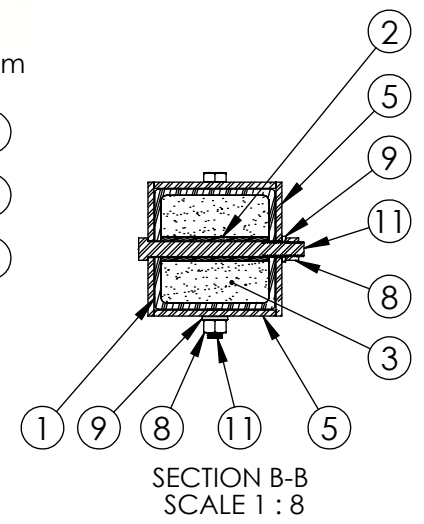
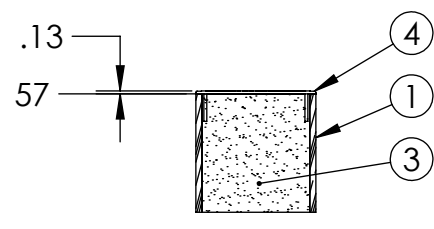


ITEM NO.	PART NUMBER	DESCRIPTION	DESCRIPTION 2	QTY
1	FB-054-M5-2	BEAM, PULTRUDED STOCK	SERIES M5 x 54 in	1
2	TG0688-0074	BUSHING	11/16 in x 4-1/2 in	2
3	FOAM	-	-	1
4	ECM1-0014-2	END CAP	SERIES M1, GRAY, SPECIAL	2
5	BK-0069	BRACKET ASSEMBLY, POLE TOP	-	1
6	BK-0072	BRACKET ASSEMBLY, POLE TOP	-	1
7	RW0688-0015	ROUND WASHER	5/8 in	2
8	HN0625-0004	HEX NUT	5/8 in - 11	4
9	LW0625-0004	LOCK WASHER	5/8 in	3
10	TR0625-0004	THREADED ROD	5/8 in - 11 x 14 in	1
11	HB0625-0002	HEX BOLT	5/8 in - 11 x 6-1/2 in	2

PUPI[®]
www.pupicrossarms.com



REVISIONS				
ECO	REV.	DESCRIPTION	DATE	INITIALS
	0.1	UPDATE DRAWING TO COMANY STANDARD LAYOUT	2013-06-12	RAF
	0.2	CLEAN FILE DESIGN CHANGE TO BK-0069	2014-04-03	RAF
1414	0.3	UPDATE DRAWING FORMAT	2016-02-09	RAF

-----UNLESS OTHERWISE SPECIFIED-----
DIMENSIONS ARE IN INCHES
INTERPRET DIM AND TOL PER ASME Y14.5-2009
ANGULAR: MACH ± 2°
BEND ± 2°
TWO PLACE DECIMAL ± 0.02
THREE PLACE DECIMAL ± 0.005

STATE: RELEASED 2016-02-11
DRAWN: BRH 2013-05-07
CHECKED: TRB 2016-02-11
APPROVED: TRB 2016-02-11
MATERIAL:
FINISH:
REPLACES: -

GEOTEK
A Whole New World of Composites
1421 SECOND AVE NW
STEWARTVILLE, MN 55976
(800) 533-1680
www.geotekinc.com

DESCRIPTION:
**POLE TOP ASSEMBLY, SERIES M5
54 in, PUPI SPX**

PROPRIETARY AND CONFIDENTIAL
THE INFORMATION CONTAINED IN THIS DRAWING IS THE SOLE
PROPERTY OF GEOTEK. ANY REPRODUCTION IN PART OR AS
A WHOLE WITHOUT THE WRITTEN PERMISSION OF GEOTEK IS
PROHIBITED.

THIRD ANGLE PROJECTION

SIZE: DWG. NO. **B BMM500054SPX2**
SCALE: 1:8 WEIGHT: 56 LBS
BEAM COLOR: **GRAY** REV: **0.3**

SHEET 1 OF 1